

ThunderMax Nitrous Assist Dry System



**THUNDER
MAX**
EFI made simple.

Developed for professional ThunderMax® EFI tuners, ThunderMax® N.A.D.S. (Nitrous Assisted Dry System) gives engine builders and racers an

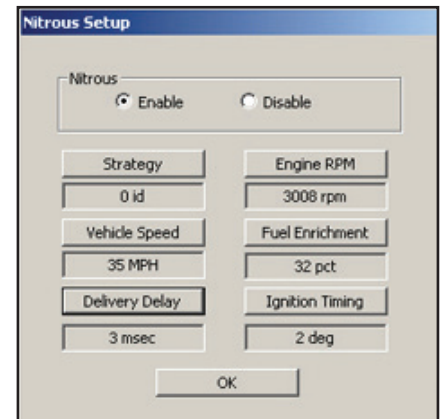
easy-to-install “dry” nitrous performance solution. The N.A.D.S. system is 95% pre-built and requires no secondary fuel source for a clean, simple installation (ThunderMax® ECM required.) *No bulky fuel pumps, fuel lines or sandwich plates required!*

The ThunderMax® N.A.D.S. kit includes a specially designed air cleaner backing plate equipped with an arming switch, nitrous solenoid, injector nozzle, and high flow air filter element. Nitrous distribution is ingeniously handled thru the ThunderMax® system for automatic control and distribution of fuel, nitrous and spark timing retard at the specific time you want the system to spray. On moderate engine builds, the additional

fuel the nitrous system requires is introduced through the existing fuel injectors. For large displacement and high performance engine builds, larger injectors will be required (sold separately.) Show polished nitrous bottle and brackets kits are available to mount the 12-oz bottle to the chassis of Dyna®, Softail® and Touring models.

Nitrous timing and activation settings are fully adjustable via the ThunderMax® tuning software. Professional ThunderMax® tuners can take advantage of the ThunderMax® tuning software to easily adjust value for activation by RPM and vehicle speed. Adjustments are also available for fuel enrichment, ignition timing retard and nitrous delivery delay. These menus are designed to allow the tuner to easily set up safe limitations for the engine when using nitrous.

Important Note: Intended for Use by Professional ThunderMax® Tuners Only! Installation of this kit on any modified or larger displacement engine will require larger injectors and custom mapping. This service should only be performed by an experienced high performance tuner familiar with ThunderMax®.



PART NO. THUNDERMAX® N.A.D.S. MAIN COMPONENT KITS (Order Bottle/Bracket Kit Separately)

- #109-210 Main Component for Big Twins with Cable-Operated Throttle Bodies (Factory A/C Bolt Pattern)
- #109-214 Main Component for '08-up Big Twins with Stock Throttle-By-Wire Throttle Bodies
- #109-213 Main Component for Big Twins w/ TMax 50, 54, or 60mm Cable-Operated Throttle Body

PART NO. THUNDERMAX® N.A.D.S. BOTTLE/BRACKET KITS

- #109-220 N.A.D.S. 2002-2008 Touring Model Bottle/Bracket Kit
- #109-222 N.A.D.S. 2009-up Touring Model Bottle/Bracket Kit
- #109-230 N.A.D.S. Softail® Model Bottle/Bracket Kit
- #109-240 N.A.D.S. Dyna® Model Bottle/Bracket Kit



PART NO. ADDITIONAL THUNDERMAX® N.A.D.S. 12oz BOTTLE

- #109-250 N.A.D.S. 12oz Bottle Only



Products on this page are not for use on pollution controlled vehicles.